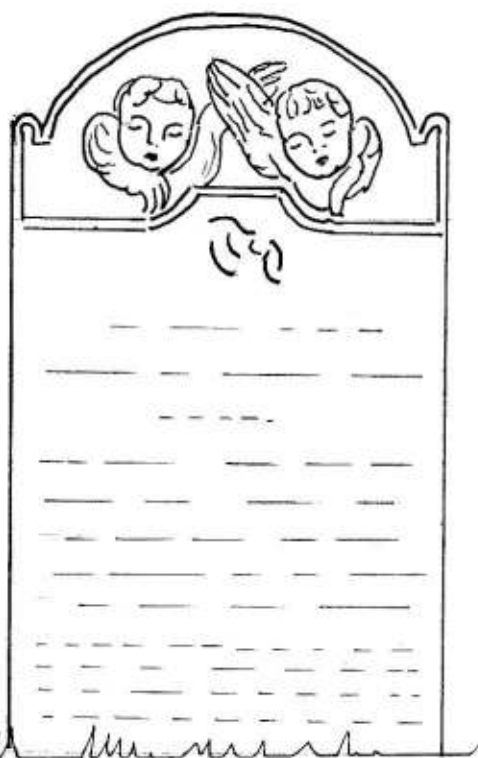



(Sperling's record no. 234.)

Grave Memorial Recording Form: St. John the Baptist, Westbourne, W. Sussex

1	National Grid Reference	755 073	Date	0	1	0	6	9	9
2	Name of recorder(s)	Veronica Jay							
3	Record No. of memorial (plus components i,ii,iii etc.)	S	W					3	1
4	No. of components or inscribed faces (record on reverse if possible)								1
5	Type of memorial: 1 = flat 2 = head 3 = tomb 4 = foot 5 = tablet 6 = other								2
6	Material and geology	LIMESTONE							
7	Stone mason or undertaker	NONE FOUND							
8	Which surfaces inscribed (facing N, S, E or W)								E
9	No. of people commemorated								2
10	Condition of monument: 1=sound 2=displaced 3=leaning 4=collapsed 5=damaged								1
11	Technique of inscription: 1 = incised 2 = carved in relief 3 = cast in relief 4 = lead letters 5 = painted								1
12	Condition of inscription 1 = very good 2 = clear 3 = worn but decipherable 4 = partly legible 5 = illegible								4
13	Dimensions (metric)	height	1	0	1	0			
		width		5	8	0			
		Thickness (or length in case of tombs)			7	0			
14	Date of memorial	1812+	Register	Benjamin s. of Thomas & Sarah Platt bu. May 1, 1811, a. 5 yrs. 7 mths James s. of Thomas & Sarah Platt. bu. May 29, 1812					
	Drawing or Photograph	Inscription							



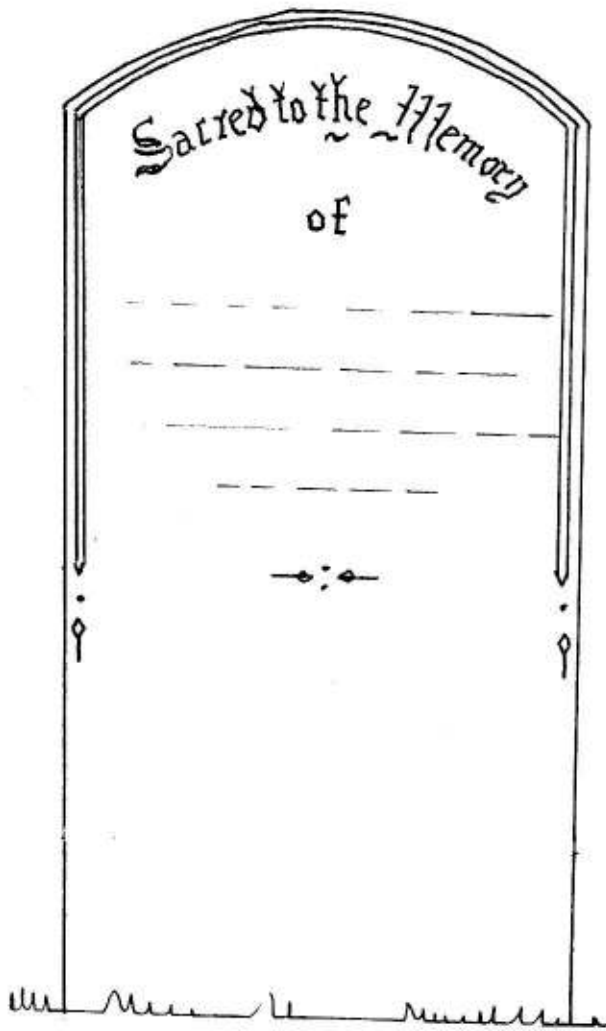

 the Memory of
 BENJAMIN THOMAS & JAMES PLATT
 Sons
 of THOMAS and SARAH PLATT
 BENJAMIN THOMAS died April [27] 1811
 Aged 5 Years and 10 Months
 JAMES died May 27 1812
 Aged [2] Years and 6 Months
 Death _____

Portions in brackets from Sperling. Slight discrepancy with register in age of Benjamin

(Sperling's record no. 234.)

Grave Memorial Recording Form: St. John the Baptist, Westbourne, W. Sussex

1	National Grid Reference	755 073	Date	2	5	0	5	9	9
2	Name of recorder(s)	BERYL LINDER							
3	Record No. of memorial (plus components i,ii,iii etc.)	S W							
4	No. of components or inscribed faces (record on reverse if possible)	3 2							
5	Type of memorial: 1 = flat 2 = head 3 = tomb 4 = foot 5 = tablet 6 = other	2							
6	Material and geology	Limestone Portland Type							
7	Stone mason or undertaker	none found							
8	Which surfaces inscribed (facing N, S, E or W)	E							
9	No. of people commemorated	1							
10	Condition of monument: 1=sound 2=displaced 3=leaning 4=collapsed 5=damaged	1							
11	Technique of inscription: 1 = incised 2 = carved in relief 3 = cast in relief 4 = lead letters 5 = painted	1							
12	Condition of inscription 1 = very good 2 = clear 3 = worn but decipherable 4 = partly legible 5 = illegible	1							
13	Dimensions (metric)	height	1	3	5	0			
		width		6	6	0			
		Thickness (or length in case of tombs)			6	0			
14	Date of memorial	1858 +	Register Benjamin Platt (Havant) bu. July 5, 1858, a. 65						
Drawing or Photograph		Inscription							

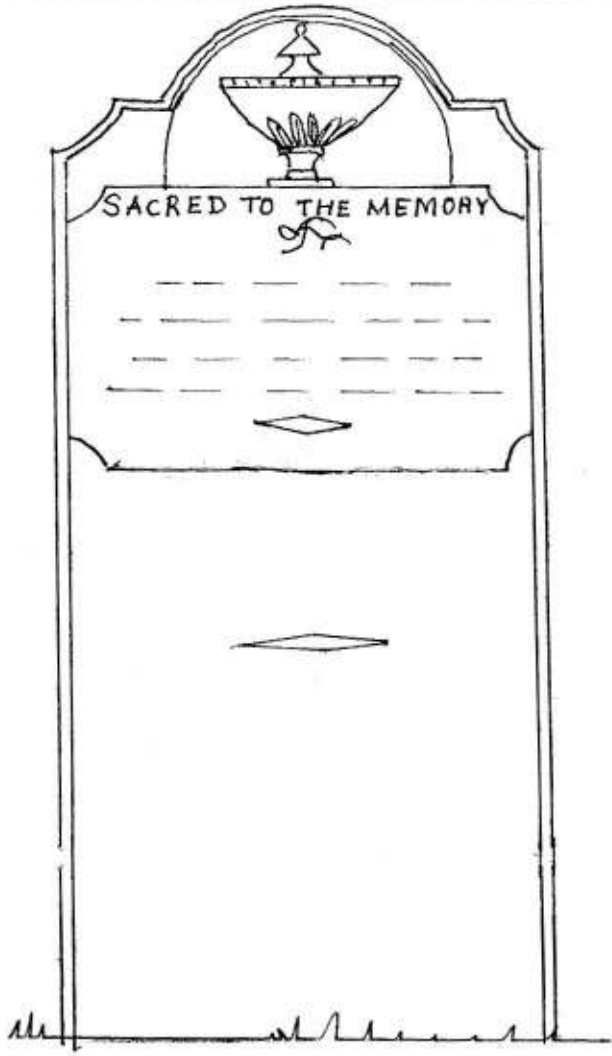


Sacred to the Memory
of
BENJAMIN PLATT
who departed this life.
on the 2nd of July 1858.
Aged 65 Years

◆:◆

Grave Memorial Recording Form: St. John the Baptist, Westbourne, W. Sussex

1	National Grid Reference	755 073	Date	2	5	0	5	9	9
2	Name of recorder(s)	June Marshall							
3	Record No. of memorial (plus components i,ii,iii etc.)	S			W			3 3	
4	No. of components or inscribed faces (record on reverse if possible)								
5	Type of memorial: 1 = flat 2 = head 3 = tomb 4 = foot 5 = tablet 6 = other	2							
6	Material and geology	Limestone							
7	Stone mason or undertaker	Not known							
8	Which surfaces inscribed (facing N, S, E or W)	E							
9	No. of people commemorated	2							
10	Condition of monument: 1=sound 2=displaced 3=leaning 4=collapsed 5=damaged	1							
11	Technique of inscription: 1 = incised 2 = carved in relief 3 = cast in relief 4 = lead letters 5 = painted				remains of paint in letters			5 1	
12	Condition of inscription 1 = very good 2 = clear 3 = worn but decipherable 4 = partly legible 5 = illegible	2							
13	Dimensions (metric)	height	1	3	8	5			
		width		6	4	5			
		Thickness (or length in case of tombs)			6	5			
14	Date of memorial	1812 +	Register	John Cave bu. Mar. 16 1812 Olive not found.					
Drawing or Photograph					Inscription				



SACRED TO THE MEMORY
of
JOHN CAVE
who departed this Life
the 12th of March 1812
In the 48 Year of his Age

◆

Also of OLIVE, Daughter of
JOHN and SARAH CAVE
who died 26. of April 1808
Aged 16 Months.

◆

Grave Memorial Recording Form: St. John the Baptist, Westbourne, W. Sussex

1 National Grid Reference	755 073	Date	0	1	0	6	9	9	
2 Name of recorder(s)	KEITH LINDER								
3 Record No. of memorial (plus components i,ii,iii etc.)	S	W					3	4	
4 No. of components or inscribed faces (record on reverse if possible)									1
5 Type of memorial: 1 = flat 2 = head 3 = tomb 4 = foot 5 = tablet 6 = other									2
6 Material and geology	STONE : LIMESTONE								
7 Stone mason or undertaker	NONE FOUND								
8 Which surfaces inscribed (facing N, S, E or W)									E
9 No. of people commemorated									2
10 Condition of monument: 1=sound 2=displaced 3=leaning 4=collapsed 5=damaged									1
11 Technique of inscription: 1 = incised 2 = carved in relief 3 = cast in relief 4 = lead letters 5 = painted									1
12 Condition of inscription 1 = very good 2 = clear 3 = worn but decipherable 4 = partly legible 5 = illegible									3
13 Dimensions (metric)	height	1	2	7	0				
	width		8	3	0				
	Thickness (or length in case of tombs)				7	5			
14 Date of memorial	1777 +	Register Sarah wife of Abraham Cave bu 22 Aug 1777							
Abraham Cave bu. 30 Nov 1818, aged 82. Hermitage in Westbourne									
Drawing or Photograph					Inscription				



In Memory of
of
ABRAHAM CAVE
who departed his life
on the 26th day of
November 1818
aged 82 Years

In Memory
of SARAH CAVE
Wife of ABRAHAM
CAVE who Died
August the 15 1777
Aged 38 Years.

Took from my eyes in
early prime of Life
I mourn the Virtuous
faithfull tender Wife
From GOD that gave
the blessing I resign
Nor impious murmur
at His Will Divine
But humbly hope when
summon'd t'appear
With Her the Blissful Joy
of Heaven to share

As you are now so once was I, as I am now so you shall be,
think of Death and Eternity

In Memory
of
ABRAHAM CAVE
who departed his life
on the 26th day of
November 1818
aged 82 Years

In Memory
of SARAH CAVE
Wife of ABRAHAM
CAVE who Died
August the 15 1777
Aged 38 Years.

Took from my eyes in
early prime of Life
I mourn the Virtuous
faithfull tender Wife
From GOD that gave
the blessing I resign
Nor impious murmur
at His Will Divine
But humbly hope when
summon'd t'appear
With Her the Blissful Joy
of Heaven to share

As you are now so once was I, as I am now so you shall be,
think of Death and Eternity



(Sperling's record no..75....)

Grave Memorial Recording Form: St. John the Baptist, Westbourne, W. Sussex

1	National Grid Reference	755 073	Date	2	5	0	5	9	9
2	Name of recorder(s)	KEITH LINDER							
3	Record No. of memorial (plus components i,ii,iii etc.)	S	W					3	5
4	No. of components or inscribed faces (record on reverse if possible)								
5	Type of memorial: 1 = flat 2 = head 3 = tomb 4 = foot 5 = tablet 6 = other								
6	Material and geology	STONE : LIMESTONE							
7	Stone mason or undertaker	NONE FOUND							
8	Which surfaces inscribed (facing N, S, E or W)								
9	No. of people commemorated								
10	Condition of monument: 1=sound 2=displaced 3=leaning slightly sideways 4=collapsed 5=damaged								
11	Technique of inscription: 1 = incised 2 = carved in relief 3 = cast in relief 4 = lead letters 5 = painted								
12	Condition of inscription 1 = very good 2 = clear 3 = worn but decipherable 4 = partly legible 5 = illegible								
13	Dimensions (metric)	height	1	2	2	5			
		width		7	3	0			
		Thickness (or length in case of tombs)			7	2			
14	Date of memorial	1807 +	Register Mary da. of Edw. & Mary Duke						
		Mary w. of Edward Duke bu. 14 Feb. 1807	// bu. Oct. 30. 1794						
		Edward Duke bu. 6 Feb. 1846 a. 78, Emsworth							
	Drawing or Photograph	Inscription							

Sacred

to the Memory of
 MARY the Affectionate Wife of
 EDWARD DUKE and Daughter of
 ABRAHAM and SARAH CAVE
 who departed this life
 the 11th day of February 1807
 in her 38 Year of her Age
 Also MARY the Daughter of
 EDWARD and MARY DUKE
 who departed this life
 the 27th day of October 1794
 in her 3rd Year of her Age
 Also EDWARD DUKE
 Husband of the above
 who Died the 1st of February 1846
 Aged 78 Years

Sacred

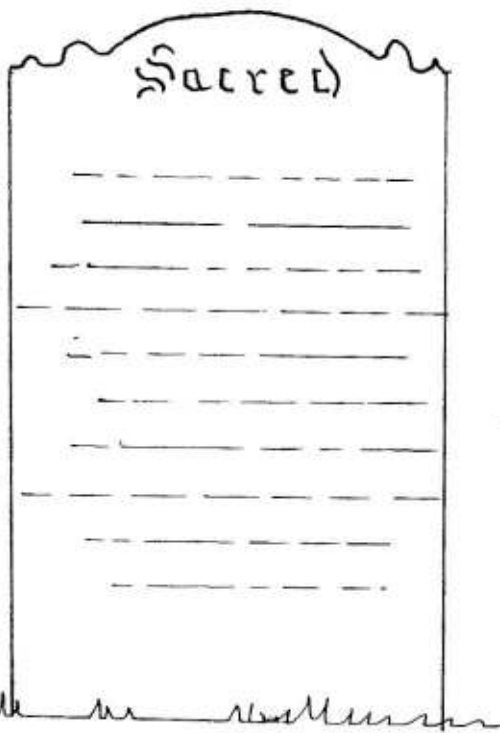
to the Memory of
 MARY the Affectionate Wife of
 EDWARD DUKE and Daughter of
 ABRAHAM and SARAH CAVE
 who departed this life
 the 11th day of February 1807
 in her 38 Year of her Age
 Also MARY the Daughter of
 EDWARD and MARY DUKE
 who departed this life
 the 27th day of October 1794
 in her 3rd Year of her Age
 Also EDWARD DUKE
 Husband of the above
 who Died the 1st of February 1846
 Aged 78 Years

lines 8 + 13 sic

(Sperling's record no..267.)

Grave Memorial Recording Form: St. John the Baptist, Westbourne, W. Sussex

1	National Grid Reference	755 073	Date	2	5	0	5	9	9
2	Name of recorder(s)	JOSEPHINE HALLETT							
3	Record No. of memorial (plus components i,ii,iii etc.)	S	W					3	6
4	No. of components or inscribed faces (record on reverse if possible)								
5	Type of memorial: 1 = flat 2 = head 3 = tomb 4 = foot 5 = tablet 6 = other	2							
6	Material and geology	STONE: LIMESTONE							
7	Stone mason or undertaker	NOT FOUND							
8	Which surfaces inscribed (facing N, S, E or W)	E							
9	No. of people commemorated	2							
10	Condition of monument: 1=sound 2=displaced 3=leaning 4=collapsed 5=damaged	1							
11	Technique of inscription: 1 = incised 2 = carved in relief 3 = cast in relief 4 = lead letters 5 = painted	1							
12	Condition of inscription 1 = very good 2 = clear 3 = worn but decipherable 4 = partly legible 5 = illegible	3							
13	Dimensions (metric)	height	1	0	6	0			
		width		6	1	5			
		Thickness (or length in case of tombs)			6	0			
14	Date of memorial	1825+	Register John Smith bur. 13 June 1825 a. 78 of Portsea late of Woodmancote Mary Tench bur. 19 Sept. 1833 a. 85, Westbourne						
Drawing or Photograph					Inscription				



SACRED

to the Memory of
JOHN SMITH
who departed this life the
13th of June 1825 Aged 78 Years
Also of MARY TENCH
Sister of the above
who departed this life the
13th of Sep 1833 Aged 85 Years
leaving two Sons
and one Daughter

Dates of John's death & burial are both 13th June; checked, discrepancy remains

Grave Memorial Recording Form: St. John the Baptist, Westbourne, W. Sussex

1	National Grid Reference 755 073	Date	2	5	0	5	9	9	
2	Name of recorder(s) Alison Galbraith								
3	Record No. of memorial (plus components i,ii,iii etc.)	S	W				3	7	
4	No. of components or inscribed faces (record on reverse if possible)								1
5	Type of memorial: 1 = flat 2 = head 3 = tomb 4 = foot 5 = tablet 6 = other								2
6	Material and geology Limestone								
7	Stone mason or undertaker none found								
8	Which surfaces inscribed (facing N, S, E or W)								E
9	No. of people commemorated								1
10	Condition of monument: 1=sound 2=displaced 3=leaning 4=collapsed 5=damaged	slightly							3
11	Technique of inscription: 1 = incised 2 = carved in relief 3 = cast in relief 4 = lead letters 5 = painted								1
12	Condition of inscription 1 = very good 2 = clear 3 = worn but decipherable 4 = partly legible 5 = illegible								3
13	Dimensions (metric)	height		7	7	5			
		width		6	1	5			
		Thickness (or length in case of tombs)			8	5			
14	Date of memorial 1719+	Register	Jane wife of Thomas Curtis b. July 27 1719						
Drawing or Photograph				Inscription					



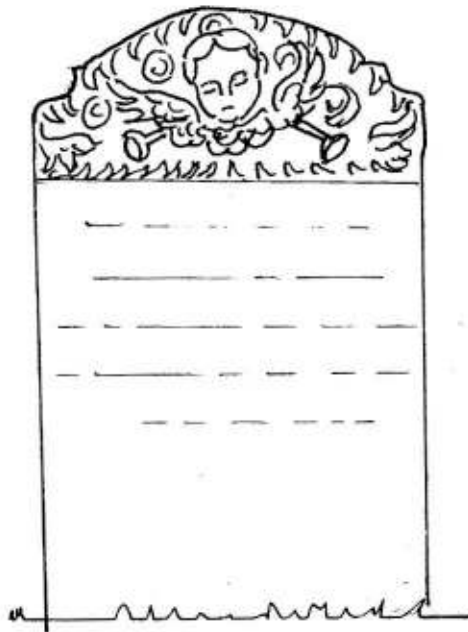
West face rough hewn

Here Lieth y Body of Jane
 & WIFE of Thomas Curtis
 who Dept this Life July
 y 13th 1719 Aged 42 years
 SHE WAS LIKE A LILLEY
 FRESH AND GREEN SOON
 CUT DOWN AND NO MORE SE^{en}

discrepancy between date of death in inscription and date of burial in register; overlong gap; both checked

Grave Memorial Recording Form: St. John the Baptist, Westbourne, W. Sussex

1	National Grid Reference	755 073	Date	0	8	0	6	9	9
2	Name of recorder(s)	J. Storer							
3	Record No. of memorial (plus components i,ii,iii etc.)	S	W					3	8
4	No. of components or inscribed faces (record on reverse if possible)	1							
5	Type of memorial: 1 = flat 2 = head 3 = tomb 4 = foot 5 = tablet 6 = other	2							
6	Material and geology	limestone							
7	Stone mason or undertaker	none found							
8	Which surfaces inscribed (facing N, S, E or W)								E
9	No. of people commemorated	1							
10	Condition of monument: 1=sound 2=displaced 3=leaning 4=collapsed 5=damaged								1
11	Technique of inscription: 1 = incised 2 = carved in relief 3 = cast in relief 4 = lead letters 5 = painted								1
12	Condition of inscription 1 = very good 2 = clear 3 = worn but decipherable 4 = partly legible 5 = illegible								4
13	Dimensions (metric)	height		8	8	0			
		width		5	1	0			
		Thickness (or length in case of tombs)				7			5
14	Date of memorial	1783+	Register	John Smith bu-11 Dec-1783					
Drawing or Photograph					Inscription				

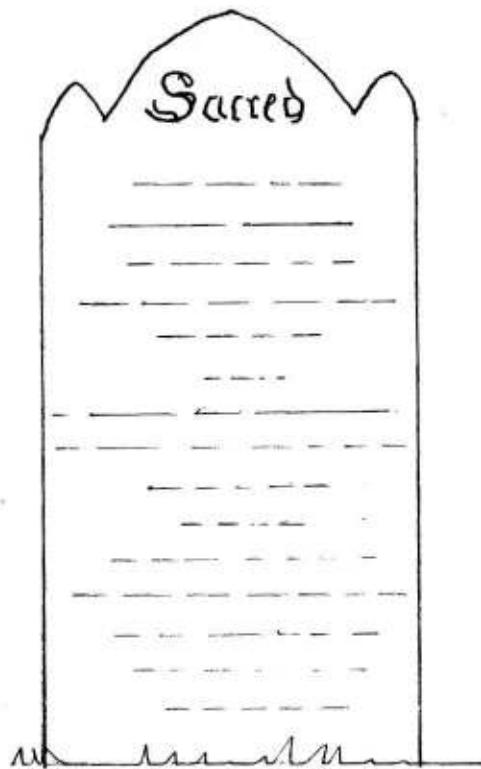


In Memory of
JOHN SMITH
 Who departed this Life
 December the [?] 1783
 Aged 75 Years

day of death illegible; Sperling
 has Dec. 17, 1787.

Grave Memorial Recording Form: St. John the Baptist, Westbourne, W. Sussex

1	National Grid Reference	755 073	Date	0	1	0	6	9	9
2	Name of recorder(s)	DAPHNE MERYON							
3	Record No. of memorial (plus components i,ii,iii etc.)	S	W					3	9
4	No. of components or inscribed faces (record on reverse if possible)								
5	Type of memorial: 1 = flat 2 = head 3 = tomb 4 = foot 5 = tablet 6 = other	2							
6	Material and geology	STONE; limestone							
7	Stone mason or undertaker	none found							
8	Which surfaces inscribed (facing N, S, E or W)	E							
9	No. of people commemorated	3							
10	Condition of monument: 1=sound 2=displaced 3=leaning 4=collapsed 5=damaged	1							
11	Technique of inscription: 1 = incised 2 = carved in relief 3 = cast in relief 4 = lead letters 5 = painted	1							
12	Condition of inscription 1 = very good 2 = clear 3 = worn but decipherable 4 = partly legible 5 = illegible	3							
13	Dimensions (metric)	height	1	4	0	0			
		width		7	4	0			
		Thickness (or length in case of tombs)			6	5			
14	Date of memorial	1818 +	Register Hannah w. of William Giles						
		(Hannah nee Hellyer bapt. June 16, 1754 m. 1777) // bu. April 17, 1806							
		William Giles bu 13 Oct 1818 age 65. Emsworth							
	Drawing or Photograph	Inscription							

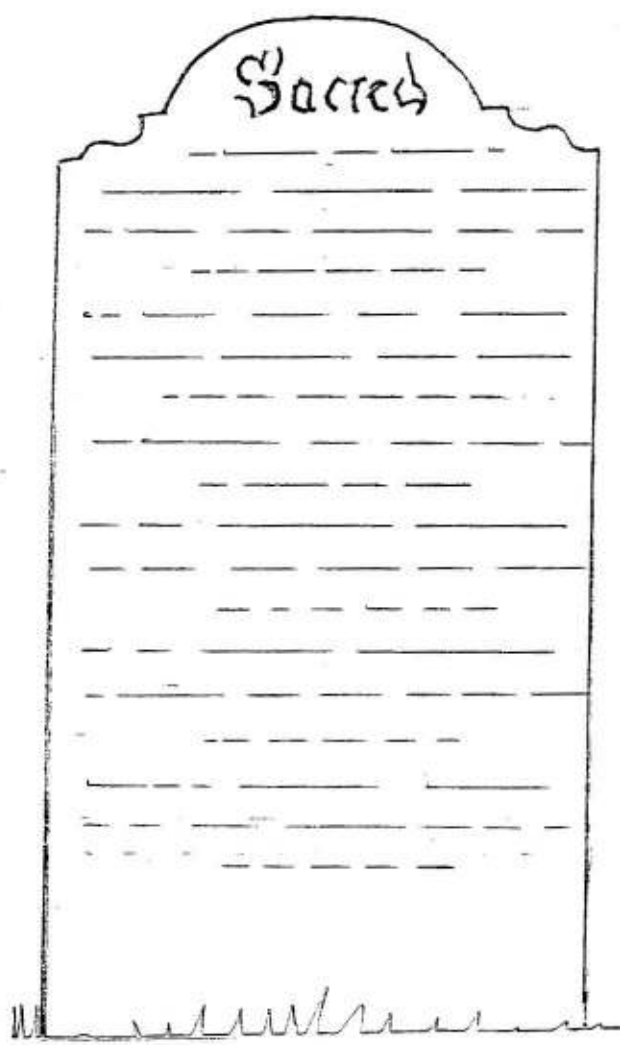


SACRED
 to the Memory of
WILLIAM GILES
 who departed this life
 the 10th day of October 1818
 aged 65 Years
 Also
 of **HANNAH** Wife of the above
 who died the 13th day of April 1806
 aged 51 Years
 And Also
 of **ROBERT** Son of the above
 who died at Auxonne in France
 the 17th day of May 1810
 when a Prisoner of War
 aged 20 Years

Auxonne is SE of Dijon, on the N5 towards Dôle. Here there was a "prison fortress of some notoriety" (N. Mitford, *Voltaire in Love* (1957) p. 50)

Grave Memorial Recording Form: St. John the Baptist, Westbourne, W. Sussex

1	National Grid Reference	755 073	Date	0	1	0	6	9	9	
2	Name of recorder(s)	PETER MERYON								
3	Record No. of memorial (plus components i,ii,iii etc.)	S	W					4	0	
4	No. of components or inscribed faces (record on reverse if possible)									
5	Type of memorial: 1 = flat 2 = head 3 = tomb 4 = foot 5 = tablet 6 = other	2								
6	Material and geology	STONE: LIMESTONE								
7	Stone mason or undertaker	none found								
8	Which surfaces inscribed (facing N, S, E or W)	E								
9	No. of people commemorated	5								
10	Condition of monument: 1=sound 2=displaced 3=leaning 4=collapsed 5=damaged	1								
11	Technique of inscription: 1 = incised 2 = carved in relief 3 = cast in relief 4 = lead letters 5 = painted	1								
12	Condition of inscription 1 = very good 2 = clear 3 = worn but decipherable 4 = partly legible 5 = illegible	2								
13	Dimensions (metric)	height	1	3	5	0	width	7	1	0
		Thickness (or length in case of tombs)			6	0				
14	Date of memorial	1851+	Register	SEE REVERSE						
Drawing or Photograph						Inscription				



Sacred
to the Memory of
WILLIAM MARSHALL
who died December 3rd 1850
Aged 29 Years
Also WILLIAM THOMAS
ROGERS MARSHALL
Son of the above
who died January 17th 1851
Aged 6 Months.
Also JOHN MARSHALL
who died November 22nd 1825
Aged 17 Years
Also ROBERT MARSHALL
who died May 8th 1832.
Aged 7 Years
Also ELLEN MARSHALL
who died May 20th 1832
Aged 4 Years.

over

In line 4, the mason first made a double m in December.

Register

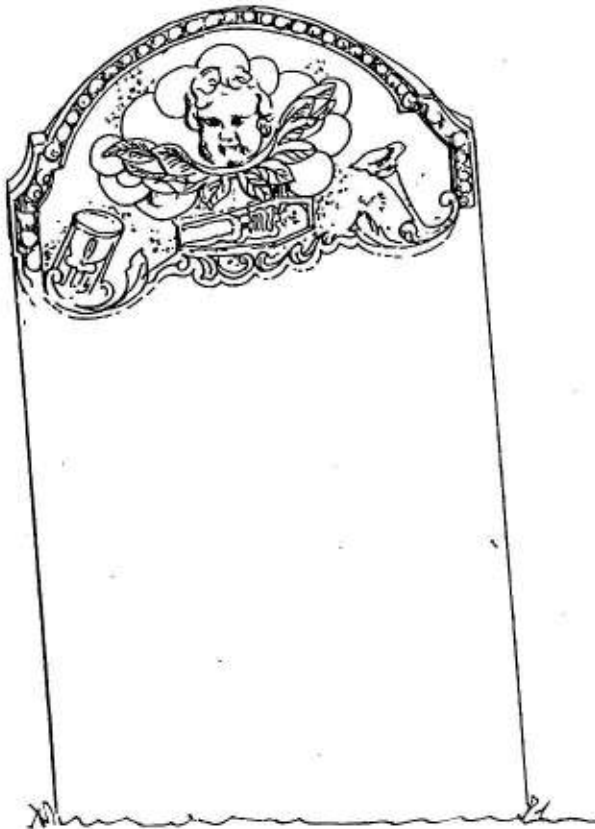
John Marshall	buried 25 November 1825	aged 17	Hermitage
Robert Marshall	buried 10 May 1832	aged 7	Hermitage (small pox)
Elizabeth* Marshall	buried 22 May 1832		(small pox)
William Marshall	buried 9 December 1850	aged 29	Hermitage
William Marshall	buried 22 January 1851		Hermitage

* The name is Ellen in the inscription, Elizabeth in the register.

(Sperling's record no...7.8....)

Grave Memorial Recording Form: St. John the Baptist, Westbourne, W. Sussex

1	National Grid Reference	755 073	Date	2	2		6	9	9	
2	Name of recorder(s)	SHIRLEY HARVEY - WHITING								
3	Record No. of memorial (plus components I,II,III etc.)	S	W					4	1	
4	No. of components or inscribed faces (record on reverse if possible)								1	
5	Type of memorial: 1 = flat 2 = head 3 = tomb 4 = foot 5 = tablet 6 = other								2	
6	Material and geology	STONE: Limestone								
7	Stone mason or undertaker	none found								
8	Which surfaces inscribed (facing N, S, E or W)								E	
9	No. of people commemorated								1	
10	Condition of monument: 1=sound 2=displaced 3=leaning 4=collapsed 5=damaged								3	
11	Technique of inscription: 1 = incised 2 = carved in relief 3 = cast in relief 4 = lead letters 5 = painted								1	
12	Condition of inscription 1 = very good 2 = clear 3 = worn but decipherable 4 = partly legible 5 = illegible								3	
13	Dimensions (metric)					height	1	1	0	
						width		6	2	
						Thickness (or length in case of tombs)			6	
14	Date of memorial	1781 +	Register	E 12 abeth w. of Edward Dennis bu. Jan. 31 1781						
Drawing or Photograph					Inscription					

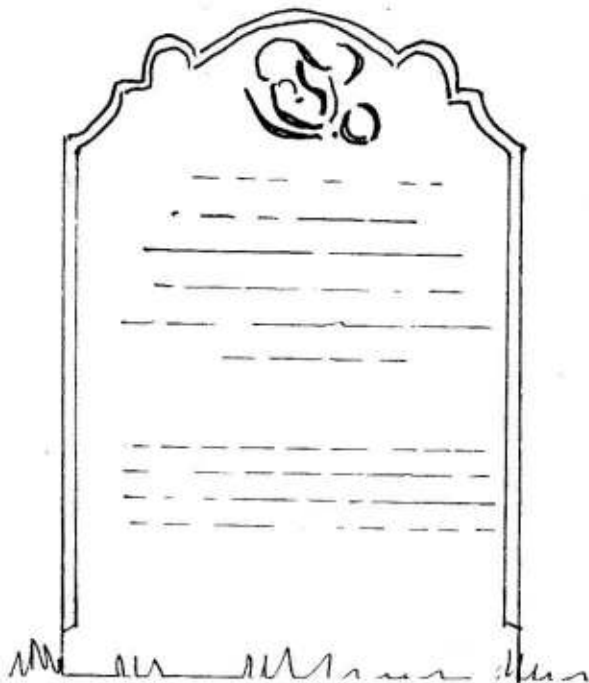


SACRED
 To the Memory
 of ELIZABTH DENNES
 Wife of EDWARD DENNES
 and Daughter of
 EDWARD & PHILLIS HELLYER
 who Died January the 29TH 1781
 Aged 24 Years.


From care remov'd sleeps Peacefull her
 A loving Wife and Mother dear
 Tho parting wraps my Soul in Grief
 From Heaven Flows this kind relief
 That we may meet on that blest Shore
 Where Tears and Sighing are no more

Grave Memorial Recording Form: St. John the Baptist, Westbourne, W. Sussex

1	National Grid Reference	755 073	Date	0	1	0	6	9	9
2	Name of recorder(s)	Alison Galbraith							
3	Record No. of memorial (plus components i,ii,iii etc.)	S	W					4	2
4	No. of components or inscribed faces (record on reverse if possible)	1							
5	Type of memorial: 1 = flat 2 = head 3 = tomb 4 = foot 5 = tablet 6 = other	2							
6	Material and geology	limestone							
7	Stone mason or undertaker	not known							
8	Which surfaces inscribed (facing N, S, E or W)	E							
9	No. of people commemorated	1							
10	Condition of monument: 1=sound 2=displaced 3=leaning 4=collapsed 5=damaged	3							
11	Technique of inscription: 1 = incised 2 = carved in relief 3 = cast in relief 4 = lead letters 5 = painted	1							
12	Condition of inscription 1 = very good 2 = clear 3 = worn but decipherable 4 = partly legible 5 = illegible	3							
13	Dimensions (metric)	height	9	0	0	width	6	0	0
		Thickness (or length in case of tombs)					6	5	
14	Date of memorial	1785+	Register	Ann w. of Thomas Hoar, Nov. 24. 1785					
Drawing or Photograph					Inscription				



bevelled edges E & W

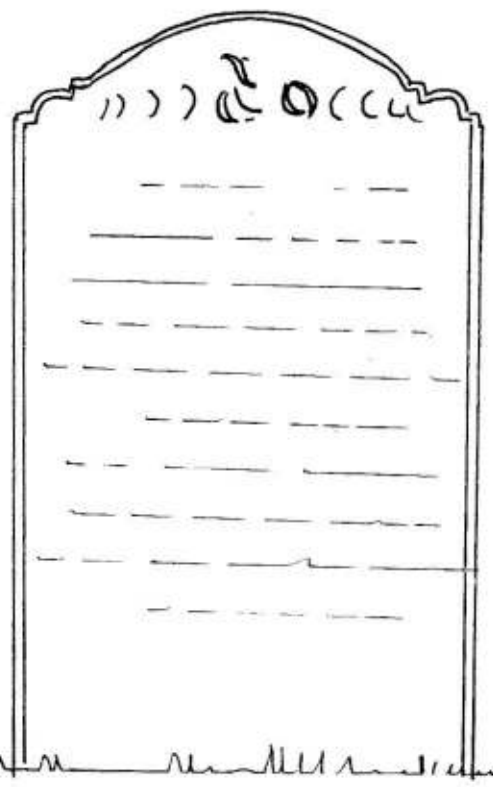

 the Memory of
 ANN the Wife of
 THOMAS HOARE
 who departed this Life
 the 22nd of November 1785
 Aged 23 Years

Death is the Painful Step we all must tread
 Joyful to those that are by Virtue laid
 Grieve not dear Friends because I died so soon
 I my Days Journey finish'd at noon.

line 2 of epitaph has "laid" for "led".

Grave Memorial Recording Form: St. John the Baptist, Westbourne, W. Sussex

1	National Grid Reference	755 073	Date	1	5	0	6	9	9
2	Name of recorder(s)	DAPHNE MERYON							
3	Record No. of memorial (plus components i,ii,iii etc.)	S	W					4	3
4	No. of components or inscribed faces (record on reverse if possible)	1							
5	Type of memorial: 1 = flat 2 = head 3 = tomb 4 = foot 5 = tablet 6 = other	2							
6	Material and geology	STONE: limestone							
7	Stone mason or undertaker	NONE FOUND							
8	Which surfaces inscribed (facing N, S, E or W)								E
9	No. of people commemorated	2							
10	Condition of monument: 1=sound 2=displaced 3=leaning 4=collapsed 5=damaged								1
11	Technique of inscription: 1 = incised 2 = carved in relief 3 = cast in relief 4 = lead letters 5 = painted								1
12	Condition of inscription 1 = very good 2 = clear 3 = worn but decipherable 4 = partly legible 5 = illegible								3
13	Dimensions (metric)	height	1	0	6	0			
		width		6	3	5			
		Thickness (or length in case of tombs)			6	5			
14	Date of memorial	1794+	Register	Mary, w. of William Hellyer					
	William Hellyer b. 30 July 1844 a. 82, Hermitage // b. Nov. 23. 1794								
Drawing or Photograph					Inscription				



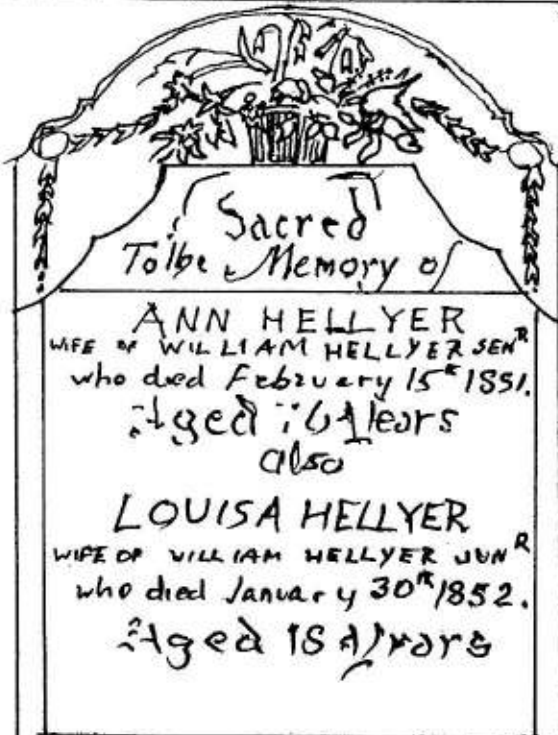
))) G O C C C C
 the Memory of
 MARY the Wife of
 WILLIAM HILLYER
 who departed this Life
 the 12th of November 1794
 Aged 28 Years
 Also WILLIAM HELLYER
 Husband of the above
 who Died the 26th of July 1844
 Aged 82 Years.

HILLYER in the fourth line } sic
 HELLYER eighth

(Sperling's record no. 1234124)

Grave Memorial Recording Form: St. John the Baptist, Westbourne, W. Sussex

1	National Grid Reference	755 073	Date	0	8	0	6	9	9
2	Name of recorder(s)	JOHN LAMPLUGH							
3	Record No. of memorial (plus components i,ii,iii etc.)	S	W					4	4
4	No. of components or inscribed faces (record on reverse if possible)								1
5	Type of memorial: 1 = flat 2 = head 3 = tomb 4 = foot 5 = tablet 6 = other								2
6	Material and geology	limestone							
7	Stone mason or undertaker	none found							
8	Which surfaces inscribed (facing N, S, E or W)								E
9	No. of people commemorated								2
10	Condition of monument: 1=sound 2=displaced 3=leaning 4=collapsed 5=damaged								1
11	Technique of inscription: 1 = incised 2 = carved in relief 3 = cast in relief 4 = lead letters 5 = painted								1
12	Condition of inscription 1 = very good 2 = clear 3 = worn but decipherable 4 = partly legible 5 = illegible								3
13	Dimensions (metric)								
		height	1	1	0	5			
		width		7	1	0			
		Thickness (or length in case of tombs)			7	5			
14	Date of memorial	1851+	Register	Ann Hellyer (Hermitage)					
				bu. Feb. 21, 1851, a. 76					
				Louise Hellyer, (Hermitage), bu. Feb. 4. 1852, a. 48					
	Drawing or Photograph	Inscription							



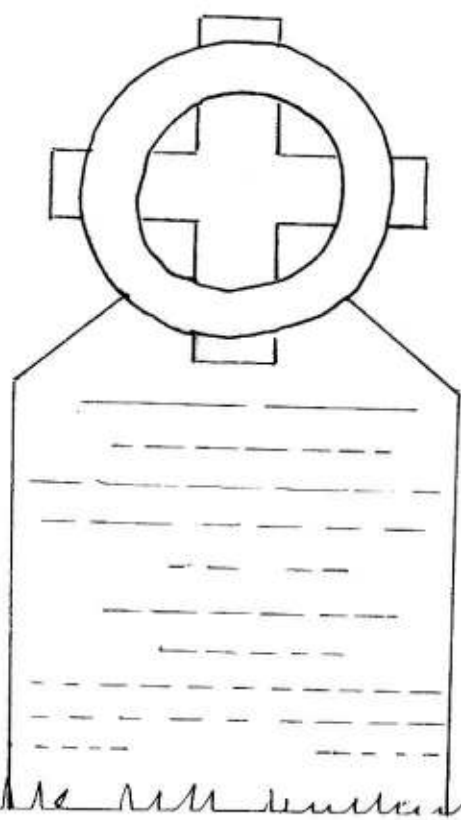
Sacred
 To the Memory of
 ANN HELLYER
 WIFE OF WILLIAM HELLYER SENR
 who died February 15th 1851.
 Aged 76 years
 also
 LOUISA HELLYER
 WIFE OF WILLIAM HELLYER JUNR
 who died January 30th 1852.
 Aged 48 years

Grave-Memorial Recording Form: St. John the Baptist, Westbourne, W. Sussex

1	National Grid Reference	755 073	Date	0	8	0	6	9	9
2	Name of recorder(s)	DAPHNE COOPER							
3	Record No. of memorial (plus components i,ii,iii etc.)	S W							
4	No. of components or inscribed faces (record on reverse if possible)	4 5							
5	Type of memorial: 1 = flat 2 = head 3 = tomb 4 = foot 5 = tablet 6 = other	1							
6	Material and geology	LIMESTONE							
7	Stone mason or undertaker	NONE FOUND							
8	Which surfaces inscribed (facing N, S, E or W)	W							
9	No. of people commemorated	1							
10	Condition of monument: 1=sound 2=displaced 3=leaning 4=collapsed 5=damaged	1							
11	Technique of inscription: 1 = incised 2 = carved in relief 3 = cast in relief 4 = lead letters 5 = painted	1							
12	Condition of inscription 1 = very good 2 = clear 3 = worn but decipherable 4 = partly legible 5 = illegible	3							
13	Dimensions (metric)	height	1	0	0	0			
		width		5	5	0			
		Thickness (or length in case of tombs)			7	0			
14	Date of memorial	1854+	Register	Ann Vollar (Aldsworth)					
				bu. May 15 1854 . a. 19					

Drawing or Photograph

Inscription



Made with hammer

ANNE VOLLOR
 MISTRESS OF
 CODFORD SCHOOL WILTS
 LATE PUPIL TEACHER OF
 WESTBOURNE
 DIED MAY 12TH 1854

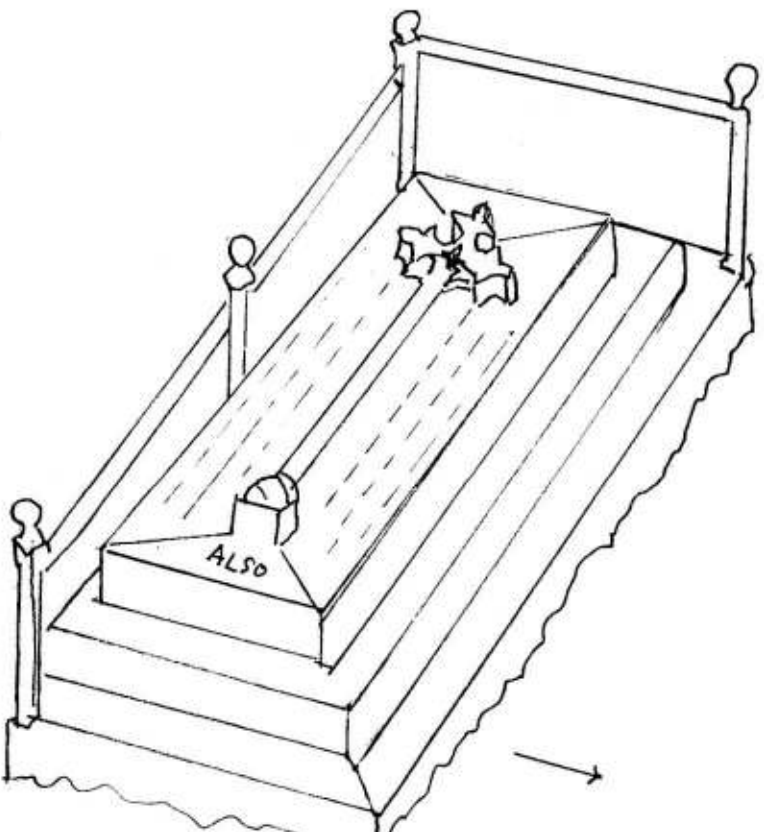
AGED 19
 I will lift mine eyes unto the
 Hills from whence cometh my
 Help

1 [Ps. 121 v1]

Chamfered edges to
 inscription section

Grave Memorial Recording Form: St. John the Baptist, Westbourne, W. Sussex

1 National Grid Reference	755 073	Date	0	8	0	6	9	9				
2 Name of recorder(s)	DAVID BURCH											
3 Record No. of memorial (plus components i,ii,iii etc.)	S	W					4	6				
4 No. of components or inscribed faces (record on reverse if possible)									4			
5 Type of memorial: 1 = flat 2 = head 3 = tomb 4 = foot 5 = tablet 6 = other									3			
6 Material and geology	WHITE MARBLE; LIMESTONE BASE; IRON RAILINGS											
7 Stone mason or undertaker	NONE FOUND											
8 Which surfaces inscribed (facing N, S, E or W)								N	S	E	W	
9 No. of people commemorated											2	
10 Condition of monument: 1=sound 2=displaced 3=leaning 4=collapsed 5=damaged											1	
11 Technique of inscription: 1 = incised 2 = carved in relief 3 = cast in relief 4 = lead letters 5 = painted											4	
12 Condition of inscription 1 = very good 2 = clear 3 = worn but decipherable 4 = partly legible 5 = illegible											1	
13 Dimensions (metric)								height			4	9
								width		1	3	7
								Thickness (or length in case of tombs)	2	4	9	0
14 Date of memorial	1855+ Register Emily Augusta Mary Maitland (Portsmouth) b. Apr. 20 1855, a. 37 Frederick Thomas Maitland b. 12 July 1883 a. 75, Hartfield, Sussex											
Drawing or Photograph	Inscription											



iii [W end of tomb]
IN
MEMORY OF
iv [E end]
ALSO



S
i

BORN THE 18TH OF AUGUST 1818. DEPARTED THIS LIFE THE 12TH OF APRIL 1855.
AGED 36 YEARS

WIFE OF LIEUT. COLONEL F.T. MAITLAND. H.M. SERVICE.
EMILY AUGUSTA MARY,

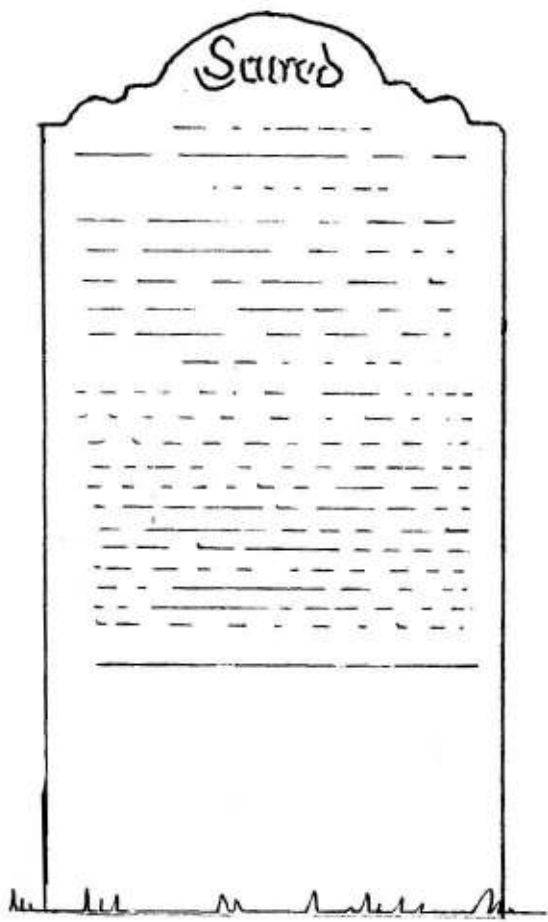
COLONEL FREDERICK THOMAS MAITLAND.
BORN 18TH OF SEPT. 1807. DIED 5TH OF JULY 1883
IN HIS 76TH YEAR

N
ii

EMILY WAS THE DAUGHTER OF RICHARD BINGHAM-NEWLAND OF WESTBOURNE.

Grave Memorial Recording Form: St. John the Baptist, Westbourne, W. Sussex

1	National Grid Reference	755 073	Date	2	0	0	7	9	9
2	Name of recorder(s)	Veronica JAY; DAPHNE COOPER							
3	Record No. of memorial (plus components i,ii,iii etc.)	S	W					4	7
4	No. of components or inscribed faces (record on reverse if possible)								
5	Type of memorial: 1 = flat 2 = head 3 = tomb 4 = foot 5 = tablet 6 = other								
6	Material and geology	LIMESTONE							
7	Stone mason or undertaker	NONE FOUND							
8	Which surfaces inscribed (facing N, S, E or W)	E							
9	No. of people commemorated	1							
10	Condition of monument: 1=sound 2=displaced 3=leaning 4=collapsed 5=damaged								
11	Technique of inscription: 1 = incised 2 = carved in relief 3 = cast in relief 4 = lead letters 5 = painted								
12	Condition of inscription 1 = very good 2 = clear 3 = worn but decipherable 4 = partly legible 5 = illegible	3							
13	Dimensions (metric)	height	1	6	3	0			
		width		8	2	0			
		Thickness (or length in case of tombs)			7	0			
14	Date of memorial	1850 +	Register	Jeremiah Staniland Brown					
		Hambrook, bu. Oct-24, 1850, a-52							
Drawing or Photograph					Inscription				



[inscription over:
Jeremiah Staniland Brown
1850]

Sacred
to the Memory of
JEREMIAH STANILAND
Fourth Son of
JEREMIAH STANILAND
and ANN BROWN of Thorpe
In the Fallow & County of Lincoln
Born Augst 18th 1798 Died Oct^r 17th 1850
Aged 52 Years

Jesus saith unto her: thy Brother shall rise again
I am the resurrection, and the Life: he that believeth
On me though he were dead, yet shall he live and be
Passed from death unto Life. xith John 28^d & 25th v s:
I heard a voice from Heaven saying unto me Write
Blessed are the dead which die in the Lord 14th Rev 13
Henceforth there is laid up for me a crown of
Righteousness which the Lord, the righteous Judge
Shall give me at that day and not to me only but
Unto all them also that love his appearing 2^d Tim. 1v 8
This stone was erected to the Memory of an
Affectionate Brother by his youngest Sister.

HARRIET LE MERCHANT