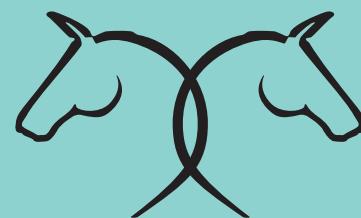




OUR VILLAGE  
OUR FUTURE  
OUR SAY



# QUESTIONNAIRE



## What is a Neighbourhood Plan [NP]?

Neighbourhood Plans are part of the Government's "localism" initiative. They are part of the official development plan system and must conform to national and local planning policies. They can help local communities shape their own environment. Westbourne Parish is in two Local Planning Authority areas: Chichester District Council [CDC] and the South Downs National Park Authority [SDNPA]. The whole of Westbourne Parish including Woodmancote and Aldsworth was formally designated as a Neighbourhood Plan Area in November 2013.

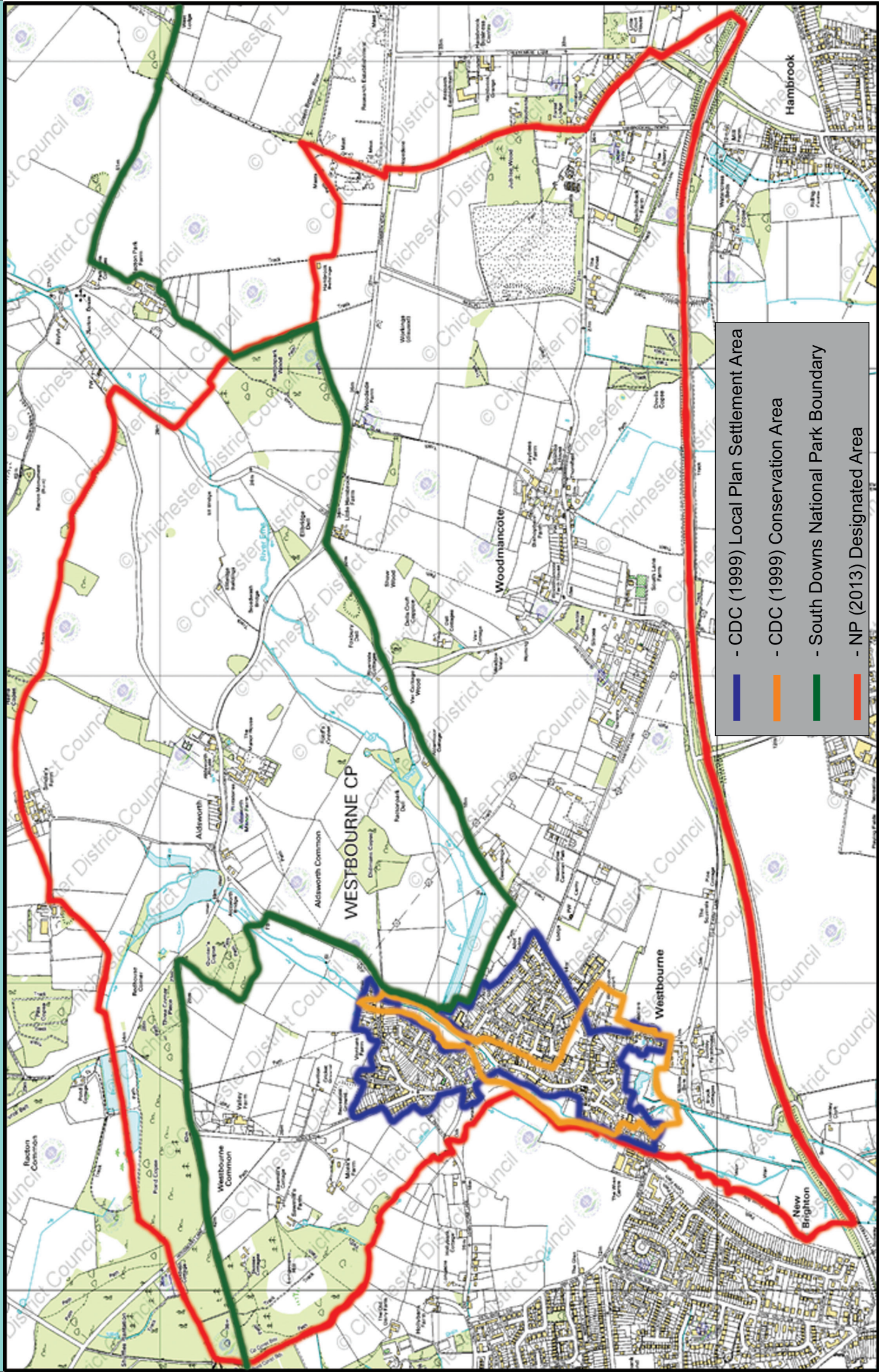
NPs should represent the views of the whole community, which is why your Neighbourhood Plan Steering Group is circulating this questionnaire to every household. The responses are vital to help us draft the content of the Neighbourhood Plan. There will be further consultation in the autumn. Details of how to return the questionnaire are on the back page. **The deadline for responses is 23rd May 2014.**

**FOR HELP ON COMPLETING THIS QUESTIONNAIRE  
AND INFORMATION ABOUT THE PRIZE DRAW  
PLEASE SEE THE BACK PAGE**

For further information visit:  
[www.westbournevillage.org](http://www.westbournevillage.org)  
[www.wnplan.co.uk](http://www.wnplan.co.uk)

Contact:  
[info@wnplan.co.uk](mailto:info@wnplan.co.uk)  
Tel. 07907 304135

THE DESIGNATED AREA COVERED BY THE WESTBOURNE NEIGHBOURHOOD PLAN  
INCLUDES THE HAMLETS OF ALDSWORTH AND WOODMANCOTE





# WESTBOURNE NEIGHBOURHOOD PLAN

**A Neighbourhood Plan promotes change that will be of benefit for the whole community**

As detailed in the Westbourne Parish Plan (2006) and Westbourne Village Design Statement (2000) the community wants Westbourne to continue to thrive as a vibrant and distinctive village, to continue to respect and reflect the views of its community, to evolve and expand whilst retaining its unique and distinctive character, and to provide an outstanding quality of life for current and future generations of residents.

This can be achieved by:

- ↪ Encouraging a thriving and prosperous community that delivers a high quality of life for all its residents.
- ↪ Promoting a distinctive and flourishing local economy that exhibits vitality and dynamism.
- ↪ Supporting measured, proportionate, timely and sustainable development to meet local requirement.
- ↪ Endorsing policies that have a positive effect on the environment, including those that remove or minimise flood risk, mitigate climate change and reduce our carbon footprint.
- ↪ Maintaining the high quality natural environment with its protected wildlife interests.
- ↪ Protecting open space within the village as well as the surrounding countryside including the landscape views, and habitats.

Objectives:

- ↪ Deliver a housing growth strategy tailored to the needs of the Westbourne Parish.
- ↪ Provide sensitive developments which protect and enrich the local landscape.
- ↪ Sustain and improve excellent local facilities for existing and new residents.
- ↪ Strengthen and support economic activity.
- ↪ Seek on-going improvements to transport, utility infrastructure and digital connectivity.
- ↪ Prioritise local distinctiveness in every element of change and growth.
- ↪ Protect green space, the landscape and support nature conservation.
- ↪ Involve local people in an on-going process of plan-making, monitoring and delivery of development.

**Your views are valued in realising this vision**

For further information visit:  
[www.westbournevillage.org](http://www.westbournevillage.org)  
[www.wnplan.co.uk](http://www.wnplan.co.uk)

Contact:  
[info@wnplan.co.uk](mailto:info@wnplan.co.uk)  
Tel. 07907 304135

# -- OUR COMMUNITY --

To ensure that Westbourne Parish retains its character as a vibrant rural community, please give below your views on our local facilities :

## YOUTH CLUB

1. In the 2006 Westbourne Parish Plan, residents noted there was a need for a Youth Club in the village.  
Is there still a need ?  
 Yes       No       Don't Know
2. Do the Youth Groups at The Meeting Place, St John's Church and Scouts replace the need for another venue ?  
 Yes       No       Don't Know

**Comments:**

## HEALTH CARE IN WESTBOURNE

3. Do you feel we need to retain a Doctors' Surgery in the centre of the village  
 Yes       No       Don't Know

**Comments:**

## COLLABORATION WITH OTHER VILLAGES

4. Do you think we should collaborate more with adjoining villages in order to pool or share services or facilities ?  
 Yes       No       Don't Know

**Comments:**



# -- OUR COMMUNITY --

## OPEN SPACES for LEISURE and RECREATION

5. Should there be more open spaces for general leisure and recreation ?  
 Yes       No       Don't Know

6. Which current open spaces should be protected ?

**Comments:**

The NP Area currently has two areas of recreational space (Monks Hill and Mill Road) the maintenance of which is paid for by the Parish.

7. Do you wish to continue to support two recreational spaces?  
 Yes       No       Don't Know

8. Do you think there should be additional sites allocated for recreational use?  
 Yes       No       Don't Know

9. Should land be prioritised for residential development rather than recreational use?  
 Yes       No       Don't Know

**Comments:**



## SPORTS FACILITIES

10. Do you think there are enough sports facilities in the village ?  
 Yes       No       Don't Know

11. If you answered 'No' what other facilities are needed ?

**Comments:**

## WESTBOURNE PRIMARY SCHOOL

12. Do you think the village school will be able to take all the infant and junior children from Westbourne who wish to attend this school ?  
 Yes       No       Don't Know

13. Does the school need extra classrooms, play or sports areas ?  
 Yes       No       Don't Know

14. Should the open space in Mill Road and other open spaces near the school be available for school use on a daily basis ?  
 Yes       No       Don't Know

# -- OUR ECONOMY --

The vision for the local economy is that it should be able to flourish and contribute to the existing financial status of the NP area whilst adding to the culture and atmosphere.

		Yes	No	Don't Know
1.	Would you like to see more independent shops in Westbourne ?			
2.	Should there be a Business Forum to co-ordinate the work of the active groups already within the NP area ?			
3.	Should we advertise new business within the NP area ?			
4.	Is a public car park essential to promote new business ?			



# -- OUR ECONOMY --



		Yes	No	Don't Know
5.	Is there adequate infrastructure in the NP area to promote new business? (e.g. roads, parking, telecomms, etc.)			
6.	Should we create more employment opportunities for young people to encourage them to remain in the area?			
7.	Do you support promoting tourism in the NP area?			

Please use the space below for any further comments you would like to make.



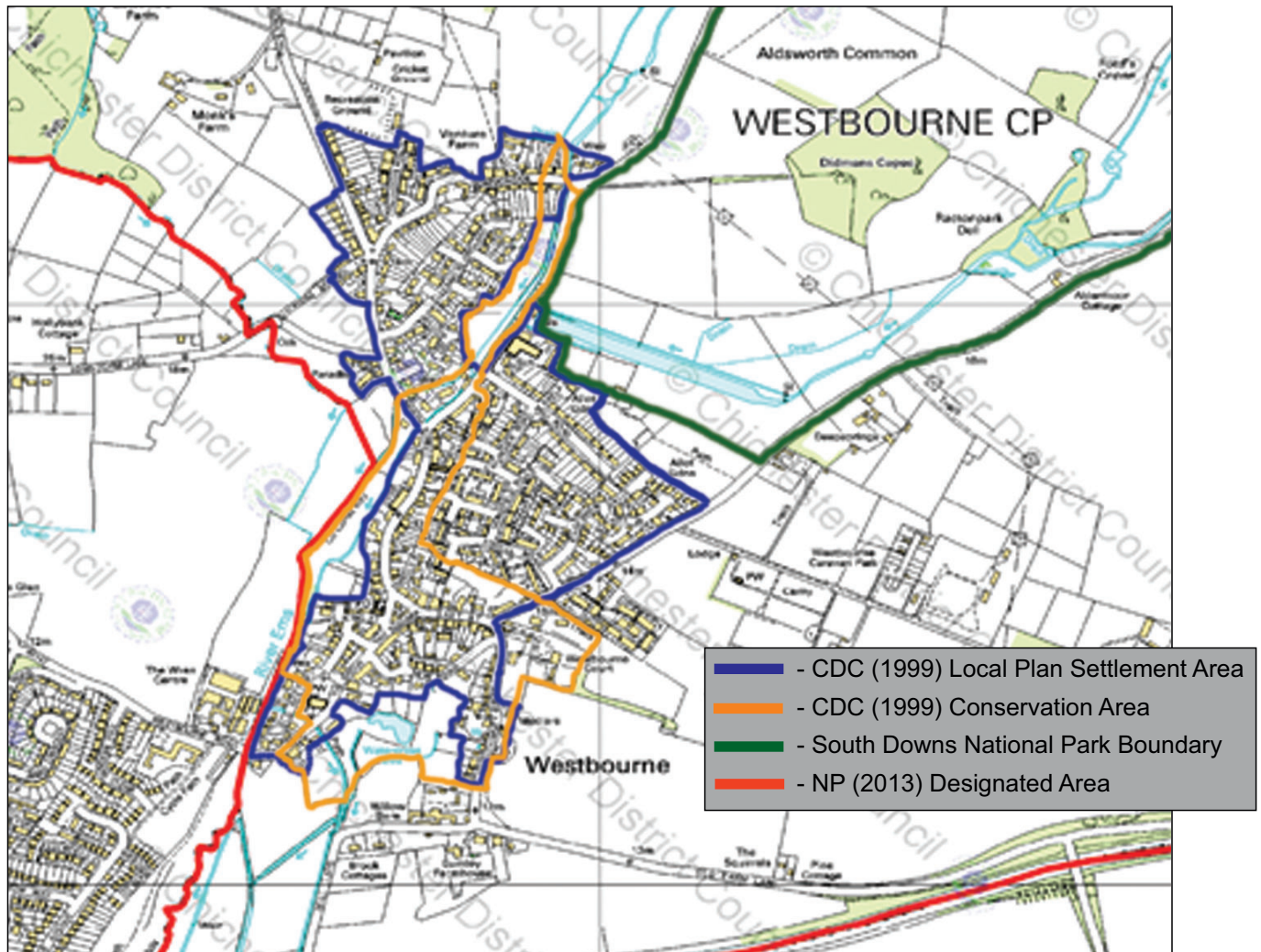




# -- OUR HOMES --

## Housing Development:

The draft Chichester Local Plan [CLP] will require Westbourne Parish to provide at least 25 new dwellings up to 2029 on sites of 6 or more, and the CLP expects these to be provided within the Westbourne Village settlement boundary. If our Neighbourhood Plan [NP] does not provide for this development then Chichester District Council can make its own site allocation[s].



Score options between 1 and 5:

1 - disagree strongly to 5 - agree strongly.

HOMES TO MEET THE NEEDS OF LOCAL PEOPLE		1	2	3	4	5
<b>New Development should:</b>						
1.	Be concentrated on one site to aid provision of infrastructure.					
2.	Be on smaller sites of 6 or more dwellings to spread the load and traffic impact.					
3.	Be contained within Westbourne Village settlement boundary.					
4.	Be located outside the Westbourne village settlement boundary within the wider NP area, e.g. Woodmancote.					
5.	Be on any available "brownfield" sites before any "greenfield" sites are considered.					

# -- OUR HOMES --

Score options between 1 and 5:

1 - disagree strongly to 5 - agree strongly.

6.	Be predominantly family housing.					
7.	Include dwellings for 1/2 person younger households.					
8.	Include sheltered or managed dwellings for older 1/2 person households.					
9.	Be predominantly open market housing. (allowing for CLP target of 30% affordable housing).					
10.	Be predominantly affordable housing. (e.g. Housing Association managed)					
11.	Comply with the Westbourne Village Design Statement.					
12.	Include measures to mitigate flood risk. (e.g. permeable external surfaces to minimise run-off).					
13.	Be permitted unless there is proven main drainage and sewage capacity.					
14.	Are you aware of any specific sites in the Neighbourhood Plan area that you believe could be developed for a sustainable housing scheme?					
15.	Are there any other issues relating to new housing development which the NP should address?					

**NOTE:** ANY NEW HOUSING DEVELOPMENT PERMITTED FOR SITES OF 6 OR MORE DWELLINGS PRIOR TO THE ADOPTION OF A NEIGHBOURHOOD PLAN WOULD REDUCE THE REQUIREMENT FOR NEW HOUSING ALLOCATIONS ACCORDINGLY.



# -- OUR ROADS --

## Our Roads – roads, parking and public transport

In the 2006 Westbourne Parish Plan, the questions attracting the most comments related to traffic and the problems it creates: parking 59%, speeding 53% and volume of traffic 38%. The situation in 2014 appears to be pretty much the same: 38% of the comments on the blue NP leaflet distributed in June/July 2013 were about roads and parking and public transport and, at the 'Have your Say' event in January 2014, it was again made very clear that roads and parking are a major concern.

**How strongly would you support...?**  
**Score options between 1 and 5:**

**1 - disagree strongly to 5 - agree strongly.**  
**Please feel free to add comments.**

### Parking

1. Introduction of Residents Parking Permits.	1	2	3	4	5
Comments					
2. A car park in Westbourne.	1	2	3	4	5
Comments					
3. The conversion of some grass verges to car parking.	1	2	3	4	5
Comments					

### Traffic through the village

4. Traffic calming measures.	1	2	3	4	5
Comments					
5. The restriction of heavy vehicles through the village (access only).	1	2	3	4	5
Comments					
6. Gateways marking entrances to the village.	1	2	3	4	5
Comments					



# -- OUR ROADS --

## Pedestrians and cyclists

7. Pedestrian crossings in The Square.	1	2	3	4	5
Comments					
8. The creation of additional pavements at the expense of road width.	1	2	3	4	5
Comments					
9. Measures to create a more pedestrian- and cyclist-friendly village.	1	2	3	4	5
Comments					

## The Square in Westbourne

10. Improvements in The Square to increase parking and reduce congestion.	1	2	3	4	5
Comments					

## Public transport

11. Improved public transport (with a potential shuttle to Emsworth).	1	2	3	4	5
Comments					
12. The provision of a bus shelter.	1	2	3	4	5
Comments					
13. A Community Car Transport Scheme.	1	2	3	4	5
Comments					

## Miscellaneous

14. More local access to the A27.	1	2	3	4	5
Comments					



# -- OUR YOUTH --

## THIS IS THE PAGE FOR ANY YOUNGER PEOPLE AGED 11 – 18 IN YOUR HOUSEHOLD

The Neighbourhood Plan aims to look at how our area can develop **over the next 15 years**. Please tell us from your point of view what important issues should be considered for the future.



### 1. How do you score Westbourne Parish as a place to live now?

(With 1 being not so good to 5 as being a great place – please circle your answer):

1                      2                      3                      4                      5

Do you have any comments?



### 2. How important do you think it is for Westbourne Parish to have new homes built in and around the village?

(With 1 being not so important to 5 as very important):

1                      2                      3                      4                      5

Do you have any comments?



### 3. How important do you feel it is to protect the present character of the village – such as traditional buildings, green open spaces etc.?

(With 1 being not so important to 5 as very important):

1                      2                      3                      4                      5

Do you have any comments?



### 4. Do you use buses to and from the village? If so, how convenient do you find them? (With 1 being not so important to 5 as very important):

1                      2                      3                      4                      5                      I don't use the buses



# -- OUR YOUTH --

➔ 5. Would you like more public transport to and from Westbourne Parish?

Yes

No

If yes, where to?



➔ 6. If you use sporting facilities, youth clubs or do other leisure activities, where do you go? (Please tick all that apply):

Chichester  Emsworth  Havant  Portsmouth  Southbourne  Westbourne

➔ 7. Do you think there should be more for young people to do in Westbourne Parish?

Yes

No

If yes, please tell us the kind of things you would like.

➔ 8. If you have any other ideas, comments or suggestions about the future of Westbourne, Aldsworth and Woodmancote, please tell us here:

**THANK YOU VERY MUCH INDEED FOR TAKING THE TIME TO TELL US YOUR VIEWS**





# WESTBOURNE NEIGHBOURHOOD PLAN



OUR VILLAGE  
OUR FUTURE  
OUR SAY



## ABOUT YOUR HOUSEHOLD

Number of occupants between 0 and 18 years

Number of occupants over 18 years

Tenure (please tick all that apply):

Owner Occupier

Tenant

Landlord

2nd Home

## HELP AND DROP IN MEETING

There will be a drop in meeting at 'The Meeting Place', North Street, Westbourne on 10th May 2014 between 10am and 4pm where members of the Neighbourhood Plan Steering Group will be able to help and answer any queries you may have regarding this questionnaire.

More information can be found at [www.wnplan.co.uk](http://www.wnplan.co.uk) or through [www.westbournevillage.org](http://www.westbournevillage.org)  
You can email us any questions at [info@wnplan.co.uk](mailto:info@wnplan.co.uk) or telephone 07907 304135.

## PRIZE DRAW

To be entered in the Prize Draw please complete and return your questionnaire by 23rd May 2014 to one of the following drop off points:

- Westbourne Stores
- Westbourne Co-op
- The Woodmancote

Or at the Drop In Meeting on 10th May at The Meeting Place.

If this is not convenient please contact your volunteer

Name:

Tel.

To spend on anything you want - CASH!  
Write your telephone number clearly here:

so we can let you know if you have won



THANK YOU FOR COMPLETING THIS QUESTIONNAIRE